

HAL.KAJO.312 Institutions and Innovation in Urban and Regional Development

Markku Sotarauta



MDP in Administrative Studies
Local and Regional Governance

MDP in Leadership for Change (LFC)

MURAKAMI



WHAT I TALK
ABOUT WHEN I TALK
ABOUT RUNNING

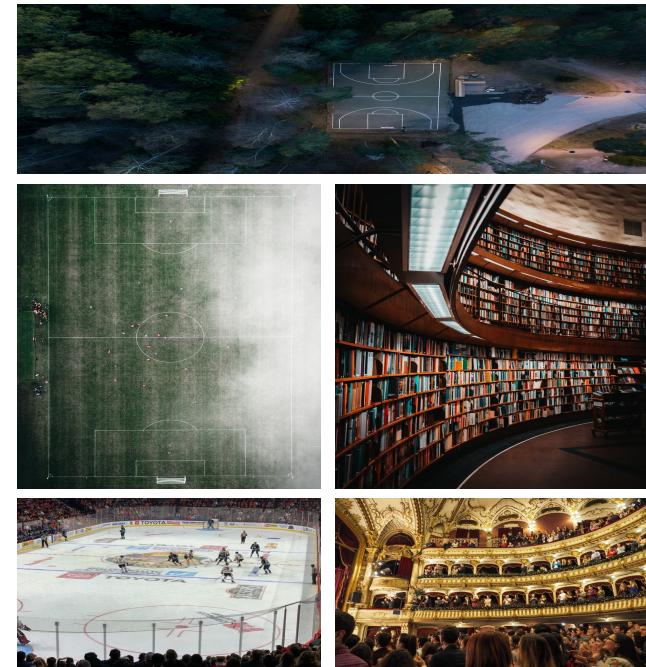
VINTAGE



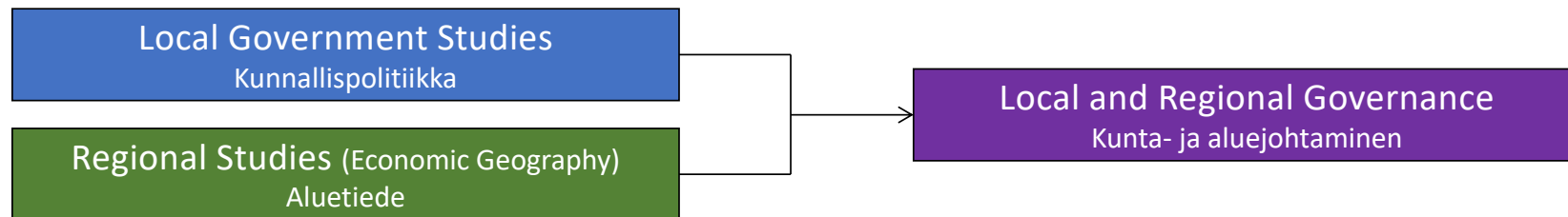
What I talk about when I talk
about institutions and innovation

The Logic

- City and regional development is about institutional change
- To develop cities and regions:
 - we need to know what are the most important mechanisms boosting innovation
 - we need to identify the main frames of action and thinking to understand economic development in cities and regions
 - we need to understand local preconditions supporting innovation

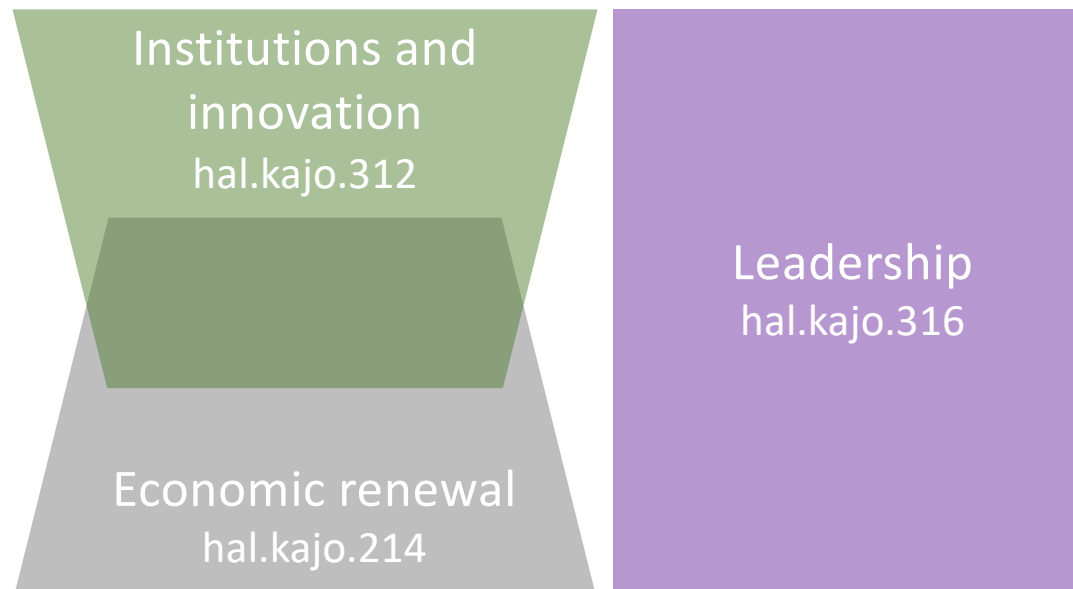


Local and Regional Governance



The three course package

Each can be done independently



- Everybody will write a learning diary drawing on the course material (in English)
- Deadline for submitting literature reviews is **March 3**
- Diaries will be sent to markku.sotarauta@tuni.fi in **pdf-format** (please add your name)
- The required minimum length of a literature review is 3200 words
- What is a learning diary and how to write a good one – check the website

Start early – start today



The material is here:

- www.sotarauta.info -> teaching -> HAL.KAJO.312
- **Please note!** Moodle is **NOT** used



Learning diary

- Introduce the main arguments and other important points of a course through your observations and interpretations
 - Connections between issues, concepts and topics discussed in the course
- Structure your learning diary by lectures and reading material, reflect on them one by one
- **Be personal** not dull as ChatGPT, do not repeat what was said but reflect on what you learnt!

Start early – start today

Learning diary



Consider the following when writing a diary:

- What was argued for, why is it important, are there any counter arguments?
- What did I learn? What was new to me? Was there something that changed my views and why?
- What did I not understand? What went against my own assumptions? Why? What was less comprehensible? Why?
- How to apply this knowledge in my other studies? How does this support my development as a professional?

A reminder

The guidelines for academic ethics and procedures for handling allegations of misconduct at [Tampere University](#) identifies violations of good study practices, one of them being: 'presenting text or a solution produced by AI as one's own'.

[Tampere University](#) welcomes the use of AI-based applications and language models (eg ChatGPT) in research and teaching

If a student uses a language model in an assignment or a thesis, for example, as part of language editing, this must always be mentioned.

Students are always responsible for the content of the texts they submit for assessment.

Tampere University's guideline on the use of AI applications (<https://intra.tuni.fi/en/content/news/45413>)
Guidelines for academic ethics and procedures for handling allegations of misconduct at Tampere University

<https://intra.tuni.fi/en/studying/studying-0/study-regulations/guidelines-academic-ethics-and-procedures-handling-allegations-misconduct-tampere-university>

Coffee Break With Researchers

In the lectures you will also meet some colleagues, the aim being to open the door to the academic discussion.



<https://coffeebreakwithresearchers.org>